

品牌源于品质, 口碑来自真诚

Brand comes from quality, and reputation comes from sincerity.

瑞安市欣业包装机械有限公司

Rui'an Xinye Packaging Machine Co.,Ltd

厂址: 浙江省瑞安市上望镇永光工业区(新104国道旁)

手机: 13958801308

销售部(国内): 86-577-65162211

销售部(国外): 86-577-65132286 65162200

传真: 86-577-65132727

邮编: 325206

网址: [//www.raxinye.com](http://www.raxinye.com)

邮箱: xinye@cnxinye.cn

Add: No.104 Main Roadside,Yongguang Zone,

Shangwang,Rui'an,Zhejiang,China

M.T: 13958801308

Sales Dept (Domestic): 86-577-65162211

Sales Dept (Foreign): 86-577-65132286 65162200

Fax: 86-577-65132727

PC: 325206

<http://www.raxinye.com>

E-mail: xinye@cnxinye.cn



XINYE PACKAGING MACHINE 2017 New Catalog

Expert Manufacturer in Non Woven Equipments

无纺布设备专业制造商

欣业包装机械

XINYE PACKAGING MACHINE





欣业包装机械

XINYE PACKAGING MACHINE

无纺布设备专业制造商

Expert Manufacturer in Non Woven Equipments



我们欣业人为了环保事业不断地努力着

Xinye people keep working for environmental responsibility

我们不断超越，下一刻，在更高点……

WE EXCEED OURSELVES CONTINUOUSLY

总经理：许一亮



中国无纺布制袋机第一品牌

— 瑞安市欣业包装机械有限公司

THE TOP BRAND OF CHINA'S NON-WOVEN BAG MAKING MACHINE

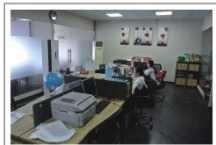
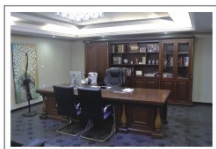
— RUIAN XINYE PACKAGING MACHINE CO.,LTD

瑞安市欣业包装机械有限公司是一家专业生产无纺布设备、无纺布制袋机、无纺布印刷机、焊把机、横切机等配套设备的生产企业。

企业自创办以来，本着“以品质换取顾客的信赖”“持续改进提高，满足顾客需要”的方针，逐渐赢得了广大客户的支持和信赖，产品逐步走出国门，远销东南亚、中东、中亚、俄罗斯、欧美等多个国家和地区。随着数字化信息时代的来临，欣业全体员工将以年轻、充满活力的姿态，来迎接新世纪的机遇与挑战。

Ruian Xinye Packaging Machine Co., Ltd. is a professional manufacturer of non-woven fabric making machine, non-woven bag making machine, non-woven printing machine, soft handle sealing machine, transverse cutting machine, and relevant equipments.

Since its establishment, with the purposes of "Gain the customer's confidence based on good quality," and "Improve continuously, meet customer's needs", we have won the support and trust from most national and International customers, from the Southeast Asia, the Middle East, Russia, America, Europe and Africa, etc. With the arrival of age of the digital information, Xinye staff in youthful and energetic attitude meet the opportunities and challenges of new century.





Look over here

全世界都在关注我们!

11/12

全自动无纺布方底焊把成型一体机 (跨越者)
Fully Automatic Non Woven Box & Loop
Handle Bag Making Machine Line

13/14

全自动无纺布焊把一体制袋机 (五合一)
Fully Automatic Non Woven Loop Handle Bag
Making Machine (Five functions in one machine)

/15

无纺布多功能平口袋制袋机
Non Woven Multifunctional Flat Bag Making Machine

/16

全自动无纺布缝纫焊把一体机
Full Automatic Non Woven Handle
Bag Making Machine With Sewing Function

/17

全自动无纺布横切烫把一体机
Automatic Non Woven Crosscut And Handle Fix Machine

/18

无纺布横切机
Non Woven Fabrics Transverse Cutting Machine
自动手提焊把机
Automatic Soft Handle Sealing Machine

19/20

各种印刷机及淋膜复合机
Printing Machines and Extrude Film Compound Unit

21/22

各种辅助设备及配件
Auxiliary Machines and Spare Parts

我们从 1995-2017 FROM

这22年的坚持与努力，这22年的创新与突破，
铸就了我们在无纺布设备制造领域的辉煌!

从起初的背心袋、鞋套、平口袋到现在的立体手提袋，
我们秉承“节能、环保、高效”的理念引领无纺布手提袋行业的发展。

22-year persistence and efforts, innovation and breakthrough, have molded
our brilliant achievements in non woven equipments. From T-shirt bag, shoe
bag and flat bag to loop handle box bag, we adhere to the principle of
"energy-saving, environmental-friendly, and high-efficiency" to lead the
development of non woven handle bag industry.





强大的售后服务团队 Strong After-Sale Service Team

随时随地的火速支持

欣业对创新和卓越的追求并不仅仅局限于设备。其为全球客户提供无与伦比的售后服务也是至胜的关键。无论他们的设备是上周还是很久之前生产的，欣业都会第一时间帮助其最大化投资回报率。

满意服务是我们的庄严承诺

- 1.现场调试和安装客户的机器，指导和培训客户的操作人员。
- 2.故障快速应对处理，一旦发生故障24小时内提供技术支持。
- 3.出国为海外客户提供安装调试和技术培训。

Unique, close to the customer

XinYE's pursuit of innovation and excellence is not just limited to the equipment. Its portfolio provide unparalleled service for global customers, no matter their equipment is produced last week, or long before, XinYE will help maximize the return on investment.

Satisfying service is our promise

1. Assembly and adjusting the machine for customer, training operator for customer.
2. Quickly respond to the machine fault, supply technical support in 24 hours after fault happen.
3. Engineer service abroad is available, such as adjusting the machine and training the operator for customer.

PACKAGING MACHINE

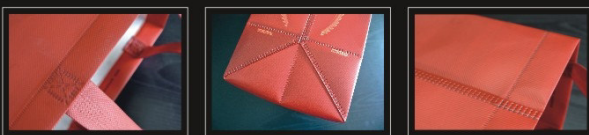




无纺布一次成型袋 One-Step Forming Non Woven Bag

环保耐用、方便携带、反复利用、防水防潮、美观牢固、经济实惠、制作成本低、人工需求量少、日均产量高

Eco-friendly, durable, easy to take with recyclable, water proof and moisture resistant. Good looking and economic low cost and few worker required High daily output.



智能 | 高效 | 安全 | 节能
环保 | 美观 | 回收 | 耐用

Smart, efficient, safe, energy saving
Beautiful, durable, environmental friendly and recyclable



这些企业正在为
环保事业做出贡献

They are contributing for the
Environment responsibility career.

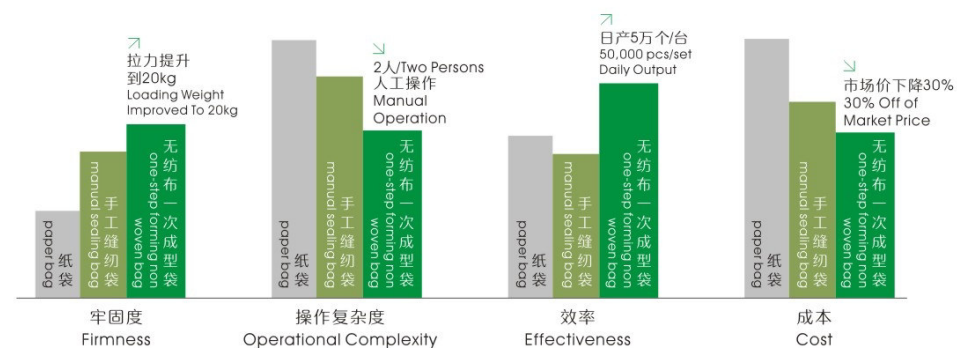
测试结果 Test Result

侧拉 Side Tear	0.305KN
竖拉 Streight Tear	0.300KN
横拉 Horizontal Tear	0.430KN



一次成型袋与其他袋子对比

Non-woven laminated bag compares to other bags



Evolution

全自动无纺布方底焊把成型一体机（跨越者）

Fully Automatic Non Woven Box & Loop
Handle Bag Making Machine Line



袋高
Height

袋宽
Width

不同规格尺寸可定做
Different size can be customized



Evolution/跨越者

性能及特点

Feature &

Characteristics

该机专注于无纺布立体袋的生产，覆膜与不覆膜立体袋一次成型，用工人量少、效率高，生产成本低，是市场上生产无纺布袋最具有竞争优势的设备。

This machine is specialized for non woven box and loop handle bag one-step making. It requires less operators and lower cost with high efficiency. It's one of the most competitive non woven bag making equipments in current market.

制袋尺寸与把长 Bag Size Loop Handle Length	侧宽/Gusset 袋宽/Width 袋高/Height 把长/Loop Handle Length	80-200mm 230-500mm 200-450mm 370-560mm	制袋速度及总功率 Speed Total Power	速度/Speed 总功率/Total Power	30-55pcs/min 22KW
气源与电压要求 Air Pressure Power	气源/Air Pressure 电压/Power	1.2m ³ /min, 0.8Mpa 380V, 50hz, 3phases, 4lines 三相四线	尺寸与重量 Overall Size Total Weight	尺寸/Overall Size 重量/Total Weight	10×2.1×2.3m 7000KG

该机获国家十多项发明专利
the machine has won a dozen of patents of invention



Note: shirt bag punching process needs to be finished separately
注：背心袋烫冲口需二次加工完成



XY-600/700/800

全自动无纺布焊把一体制袋机 (五合一)

Fully Automatic Non Woven Loop Handle Bag Making Machine
(Five functions in one machine)

工艺流程 Non Woven Bag Making Machine Procedure

卷筒料 — 折边 — 热合 — 对折 — 烫把 — 定位 — 热合 — 切断 — 收集成品
Raw material—bag mouth folding—thermal bonding—folding up—bottom sealing—loop handle fix—positioning—thermal bonding—bag cutting—collecting

性能及特点 Feature & Characteristics

该机适用原材料为无纺布，能加工各种不同规格，不同形状的无纺布袋，无纺布焊把袋，拉链袋如马夹袋、手提袋、立体袋、鞋皮包袋等。

该机集机、电为一体，运用双触摸屏操作，配以步进式定长，光电跟踪，准确，平稳。自动计数即可设定计数报警，自动打孔等工控装置，使其生产的成品封线牢固，切线美观，高速高效，是您可以放心使用的优质环保型制袋设备。

This machine uses non-woven fabrics material. It can produce many kinds and sizes of bags such as vest bags, loop handle bags, ziplock bags, flat bags, box bags, ribbon-through bags for shoes and purse, etc.

It is equipped with two computer touch screens, step motor to control the length and photocell to track accurately and steadily. There are control devices like auto-counting alarming, auto-punching etc., which make the finished products well-sealed and nice-cutting with high speed and efficiency. It is an ideal environmental friendly bag making equipment.

型号/Model	XY-600	XY-700	XY-800
制袋尺寸与把长 Bag Size	袋宽/Width 100-800mm	袋宽/Width 100-800mm	袋宽/Width 100-800mm
Loop Handle Length	袋高/Height 220-550mm	袋高/Height 220-650mm	袋高/Height 220-750mm
速度及总功率 Speed Total Power	把长/Loop Handle Length 370-560mm	把长/Loop Handle Length 370-560mm	把长/Loop Handle Length 370-560mm
气源与电压要求 Air Pressure Power	速度/Speed 40-120pcs/min 总功率/Total Power 13.5KW	速度/Speed 40-120pcs/min 总功率/Total Power 15KW	速度/Speed 40-120pcs/min 总功率/Total Power 16KW
尺寸与重量 Overall Size Total Weight	气源/Air Pressure 1.0m ³ /min, 0.8Mpa 电压/Power 380V, 50hz, 3phases, 4lines 三相四线 单相220V	气源/Air Pressure 1.0m ³ /min, 0.8Mpa 电压/Power 380V, 50hz, 3phases, 4lines 三相四线 单相220V	气源/Air Pressure 1.0m ³ /min, 0.8Mpa 电压/Power 380V, 50hz, 3phases, 4lines 三相四线 单相220V
	尺寸/Overall Size (L × W × H) 12 × 3.4 × 1.9m	尺寸/Overall Size (L × W × H) 12 × 3.5 × 2.1m	尺寸/Overall Size (L × W × H) 12 × 3.6 × 2.3m
	重量/Total Weight 3500KG	重量/Total Weight 4000KG	重量/Total Weight 4500KG

不同规格尺寸可定做 Different size can be customized

XY-600/700/800

无纺布多功能平口袋制袋机

Non Woven Multifunctional Flat Bag Making Machine

注：背心袋U型冲口需二次加工完成
Note:T-shirt bag punching process needs to be finished separately



XY-600

XY-700

XY-800

性能及特点 Feature & Characteristics

该机适用原材料为无纺布，能加工各种不同规格，不同型状的无纺布背心袋、平口袋等。该机集机、电为一体，运用双触摸屏操作，配以步进式定长，光电跟踪，准确，平稳。自动计数即可设定计数报警，自动打孔等工控装置，使其生产的成品封线牢固，切线美观。高速高效，是您可以放心使用的优质环保型制袋设备。

This machine uses non-woven fabrics material. It can produce many kinds and sizes of non woven vest bag and flat bag, etc. It is equipped with two computer touch screens, step motor to control the length and photocell to track accurately and steadily. There are control devices like auto-counting alarming, auto-punching etc., which make the finished products well-sealed and nice-cutting with high speed and efficiency. It is an ideal environmental friendly bag making equipment.

制袋尺寸 Bag Size	袋宽/Width 袋高/Height	100-800mm 220-550mm	100-800mm 220-650mm	100-800mm 220-750mm
速度及总功率 Speed Total Power	速度/Speed 总功率/Total Power	40-120pcs/min 9.5KW	40-120pcs/min 11.5KW	40-120pcs/min 11.5KW
气源与电压要求 Air Pressure Power	气源/Air Pressure 电压/Power	1.2m ³ /min, 0.8Mpa 380V, 50hz, 3phases, 4lines 三相四线, 单相220V	1.2m ³ /min, 0.8Mpa 380V, 50hz, 3phases, 4lines 三相四线, 单相220V	1.2m ³ /min, 0.8Mpa 380V, 50hz, 3phases, 4lines 三相四线, 单相220V
尺寸与重量 Overall Size Total Weight	尺寸/Overall Size (L×W×H) 重量/Total Weight	7.4×1.5×1.9m 2500KG	7.5×1.7×2.1m 3000KG	7.5×1.9×2.3m 3500KG

XYFH-2016

全自动无纺布缝纫焊把一体机

Full Automatic Non Woven Handle Bag Making Machine With Sewing Function

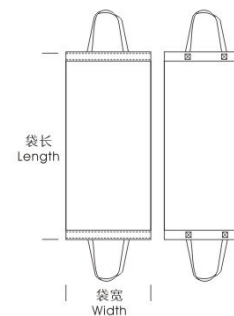
注：该机为一机两用机组，缝纫机和超声波可独立操作
Note: The machine unit has two parts for sewing machine and ultrasonic sealing machine to work separately



XYFH-2016

该机适用原材料为无纺布，能加工各种不同规格，不同形状无纺布袋的缝纫、焊把工艺。该机集机、电、气为一体，运用双触摸屏操作，配以步进式定长，光电跟踪，准确，平稳。自动计数即可设定计数报警，断线、针距跑位、焊把走位时可自动停机，使其生产的成品封线牢固，切线美观。高速高效，是您可以放心使用的优质环保型制袋设备。

The machine uses for non-woven material; it can sew and make many kinds and sizes of bags. It is equipped with two computer touch screens, step motor to control the length and photocell to track accurately and steadily. There are control devices like auto-counting alarming, auto shut-down system etc., which make the finished products well-sealed and nice-cutting with high speed and efficiency. It is an ideal environmental friendly bag making equipment.



成品尺寸与把长 Sheet Size Loop Handle Length	成品生产长度/Length 成品生产宽度/Width 把长/Loop Handle Length	500-1000mm 300-550mm 380-550mm
速度及总功率 Speed Total Power	速度/Speed 总功率/Total Power	8-13m/min 13.5KW
气源与电压要求 Air Pressure Power	气源/Air Pressure 电压/Power	1.0m ³ /min, 0.6Mpa 380V, 50hz, 3phases, 4lines 三相四线, 单相220V
尺寸与重量 Overall Size Total Weight	尺寸/Overall Size (L×W×H) 重量/Total Weight	11×2.2×1.95m 3000KG

XY-1200/1300

全自动无纺布横切烫把一体机

Automatic Non Woven Crosscut And Handle Fix Machine



XY-1200

XY-1300

性能及特点 Feature & Characteristics

该机专用于无纺布片料的裁切，裁片的同时自动焊上手提把，主要针对无纺布酒袋、礼品袋等。该机采用步进电机控制定长裁切，设有光电跟踪修正系统；放料系统采用自动光纠偏装置。本机配有折边，超声波烫合，全自动烫手提把，切片功能，集光、电、气为一体，操作简便，裁切精度高，机械稳定，噪音低等优点；电机变频调速，自动计数，报警停车，张力控制等功能；采用重型优质刀具裁切，产品整齐，无棱角。

This machine is special designed for non woven sheet cutting. When cutting the sheet, it can fix the loop handle automatically. It is designed for manual non woven bag making such as non woven wine bags, non woven gift bags, etc. The machine uses stepping motor to control the non woven sheet cutting, also with photocell correction system. It adopts EPC system to control the unwinding unit. It can automatically finish the side folding, ultrasonic sealing, loop handle fixing and sheet cutting with advantages in easy operation, high production speed and low noise. The main motor adopts inverter motor, which has auto-counting and auto-alarming functions. It also has auto tension control system and equipped high quality cutter to make trim final products.

制片尺寸与把长 Crosscut Size Loop Handle Length	制片长度/Crosscut Length	500-1100mm	500-1200mm
	制片宽度/Crosscut Width	280-800mm	280-800mm
	把长/Loop Handle Length	380-560mm	380-560mm
速度及总功率 Speed Total Power	速度/Speed	30-60pcs/min	30-60pcs/min
	总功率/Total Power	10.5KW	11.5KW
气源与电压要求 Air Pressure Power	气源/Air Pressure	1.0m ³ /min, 0.6Mpa	1.0m ³ /min, 0.6Mpa
	电压/Power	380V, 50hz, 3phases, 4lines 三相四线, 单相220V	380V, 50hz, 3phases, 4lines 三相四线, 单相220V
	尺寸与重量 Overall Size Total Weight	尺寸/Overall Size (L×W×H)	7.5×1.5×1.9m
	重量/Total Weight	2500KG	3000KG

HQXY-600/1000/1200

Non Woven Fabrics Transverse Cutting Machine 无纺布横切机



	型号/Model	HQXY-600	HQXY-1000	HQXY-1200
制片尺寸与厚度 Crosscut Size Crosscut Thickness	制片宽度/Crosscut Width	100-550mm	100-950mm	100-1150mm
	制片长度/Crosscut Length	30-1000mm	30-1000mm	30-1000mm
	厚度/Thickness	20-150gsm	20-150gsm	20-150gsm
速度及总功率 Speed Total Power	速度/Speed	20-140pcs/min	20-140pcs/min	20-140pcs/min
	总功率/Total Power	3KW	4KW	7KW
尺寸与重量 Overall Size Total Weight	尺寸/Overall Size (L×W×H)	2.8×1.0×1.2m	3.5×1.45×1.3m	3.5×1.55×1.3m
	重量/Total Weight	2500KG	3000KG	3000KG

XY-A/B700

Automatic Soft Handle Sealing Machine 自动手提焊把机



型号/Model	XY-B700
提带长度/Bag Length	350-570mm
提带厚度/Thickness	60-100gsm
电源/Power Supply	380V, 220V
速度/Speed	10-65pcs/min
尺寸/Overall Size	1.95×1.0×1.5m



型号/Model	XY-A700
提带长度/Bag Length	380-570mm
提带厚度/Thickness	60-100gsm
电源/Power Supply	380V, 220V
速度/Speed	20-65pcs/min
尺寸/Overall Size	2.25×1.3×1.6m

YT Series

柔性凸版印刷机

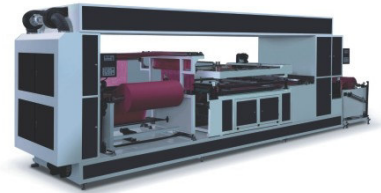
Flexible Printing Machine



ZF-1200

全自动单色卷对卷无纺布丝网版印刷机

Automatic Single Color Roll To Roll Non-woven Fabric Screen Printing Machine



XYAY-C

高速(七电机)电脑套色凹版印刷机

High-speed(seven vector motor)Computerized Color Register Rotogravure Press



SJFM800-1800

高速挤出淋膜复合机组

High-Speed Extrusion Film Compound Unit



YT Series

机型 Model	印刷宽度 Printing Material	印刷宽度 Printing Width	印刷速度 Printing Speed	板厚 Thickness of Plate	总功率 Total Power	外形尺寸 Overall Dimension
YT-61000	1000mm	960mm	5~50m/min	2.38mm	18KW	3.9×2.06×2.95m
YT-6800	800mm	760mm	5~50m/min	2.38mm	15KW	3.9×1.86×2.95m
YT-6600	600mm	560mm	5~50m/min	2.38mm	13KW	3.9×1.66×2.95m
YT-41000	1000mm	960mm	5~50m/min	2.38mm	14.37KW	4.2×2.0×2.4m
YT-4800	800mm	760mm	5~50m/min	2.38mm	12.5KW	4.2×1.8×2.4m
YT-4600	600mm	560mm	5~50m/min	2.38mm	10.87KW	4.2×1.6×2.4m
YT-21000	1000mm	960mm	5~50m/min	2.38mm	12KW	2.3×2.26×2.145m
YT-2800	800mm	760mm	5~50m/min	2.38mm	10KW	2.3×2.06×2.145m
YT-2600	600mm	560mm	5~50m/min	2.38mm	8KW	2.3×1.86×2.145m

ZF-1200

型号	Model	ZF-1200
最大印刷尺寸	Max.Printing Size	1300×1200mm
无纺布卷幅宽	Nonwoven Fabric Roll Width	1250mm
无纺布克重	Nonwoven Fabric Thickness	45~158g/m
放料机最大卷料直径	Max. Diameter of Roll	1000mm
生产速度	Production Speed	500~1000m/h
电源总功率	Voltage&Total Power	380V 340P4N 24KW
设备尺寸	Overall Size	11x1.9x1.72m
机器重量	Total Weight	2450KG

XYAY-C

型号	Model	XYAY-C
有效印刷宽度	Effective Printing Width	1000mm
基材最大宽度	Max.Width of Web	1050mm
印刷最高速度	Max.Printing Speed	140m/min
机械最高速度	Max.Mechanical Speed	150m/min
收放卷最大直径	Max.Diameter of Unwind/Rewind	+600mm
基材卷芯内径	Inside Diameter of Rollcore	+76mm
印刷版辊直径	Diameter of Printing Cylinder	120-300
电脑套准修正精度	Accuracy of Computer Registration	+0.10mm(Whole Machine)
张力控制范围	Tension Control Range	0-25kg/Full Width
烘箱加热功率	Heating Power of Oven	144KW
机器总功率	Total Power	199KW
机器重量	Total Weight	22000KG
外形尺寸	Overall Size	16×3.6×3.1m

SJFM800-1800

型号 Model	SJFM-800	SJFM-1100	SJFM-1300	SJFM-1600	SJFM-1800
模唇长度 Length of Die Lip	900mm	1200mm	1400mm	1800mm	2000mm
制品宽度 Width of Finished Product	400-700mm	500-1000mm	600-1250mm	800-1500mm	900-1700mm
最高复合速度 Max Compounding Speed	10-150m/min	10-150m/min	10-150m/min	10-150m/min	10-150m/min
淋膜厚度 Width of Laminating Film	0.01-0.1mm	0.01-0.1mm	0.01-0.1mm	0.01-0.1mm	0.01-0.1mm
螺杆直径长径比 L/D Ratio for Screw	Φ80mm×30	Φ95mm×30	Φ105mm×30	Φ120mm×30	Φ140mm×30
收放卷最大直径比 Max Diameter for Roll unwinding and Rewinding	Φ1200mm	Φ1200mm	Φ1200mm	Φ1200mm	Φ1200mm
外形尺寸 Overall Size	9.6×6.0×3.2m	9.6×7.0×3.2m	9.6×8.0×3.2m	9.6×9.0×3.2m	9.6×12×3.2m
装机功率 Total Power	60KW	70KW	80KW	100KW	130KW
复合/镜面冷棍 Compounding/Mirror Cool Roll	Φ510mm	Φ510mm	Φ510mm	Φ510mm	Φ510mm
适用基材 Applicable Base Material	纸张 铝箔 BOPP /BOPET/BOPA/ CPP/CPE Paper, Aluminum Foil, BOPP, BOPET, BOPA, CPP, CPE				

ZWQ-1300

电脑控制自动卧式分切机
Computer Controlled Automatic
Horizontal Slitting Machine



自动冲孔机
Automatic T-shirt Punching Machine



ZWQ-1300

型号	Model	ZWQ-1300
卷材最大宽度	Max Width of Roll Material	1300mm
卷材最大直径	Max Diameter of Roll Material	Φ600mm
卷材成品宽度	Width of Slitting Roll Material	30-1300mm
分切速度	Slitting Speed	5-180m/min
电机功率	Motor Power	5.5KW
整机重量	Machine Weight	2200KG
外形尺寸	Overall Size	2.2×2.1×1.2m

BX-10T

型号	Model	BX-10T
总功率	Total Power	1.1KW
工作台面积	Table Size	710×410mm
重量	Weight	400KG
压力	Pressure	10T
外形尺寸	Overall Dimension	0.71×0.8×1.3m
最大冲裁力	Max. Wash of Cutting Dint	100kn
摆臂宽度	Swing Beam Width	350mm
冲程调节范围	Stroking Regulate Range	5-75mm
冲裁速度	Wash of Cutting Speed	0.10m/s
上下工作台使用距离 (不装切割垫板)	Up and Down Operation Bed Distant for Usage	65-150mm
下工作台面积	Down Table Size	1.0×0.5m
电机动力	Electric of Power	1.5KW

XYZD-500

无纺布立体袋折袋机
Nonwoven Box Bag Folding Machine



超声波滚边机
Ultrasonics Sewing Machine
(Lace Sewing Machine)



BX-10T

液压摇臂式裁断机
Hydraulic pressure Rock-arm
Decide Machine



XYZD-500

型号	Model	XYZD-500
侧宽	Gusser	80-200mm
袋宽	Width	230-480mm
袋高	Height	200-450mm
速度	Speed	20-60m/min
电压	Power	220V
重量	Total Weight	200KG
尺寸	Overall Size	3.2×0.9×1.0m

配件系列 Spare Parts



气动打孔
Pneumatic Punch



方头模具
Square Mould



圆头模具
Round Mould



超声波发生器
Ultrasonic Generator Box



静电杆
Static Bar

静电消除器
Static Eliminator



变频器
Inverter



压痕轮
Press Wheel



花轮
Lace Roller



模具
Mould



裁切刀
Cutting Knife



花刀
Knurling Tool